

AP Vision Theme Designer Software User Manual

Version 1.1
February 2017
Written by Tino de Rijk

Table of Contents

| | |
|---|----|
| 1. Introduction..... | 3 |
| 1.1 Reason for these instructions | 3 |
| 1.2 About the AP Vision Theme Designer software..... | 3 |
| 1.3 Copyright and Applicable Law | 3 |
| 2. Creating a new colour theme..... | 4 |
| 3. Customising your new colour theme | 7 |
| 4. Creating an upload file..... | 16 |
| 5. Upload the file to your handset with AP Communicator | 19 |

1. Introduction

1.1 Reason for these instructions

These instructions explain to the user of the AP Vision Theme Designer software program how to use this Windows program.

1.2 About the AP Vision Theme Designer software

The APD Vision Theme Designer software program is designed to make it possible to create custom colour themes for the 2020 Vision handset with colour screen of the AP Inspiration Vision line of ECCR's (Electronically controlled closed circuit rebreathers), as released in 2015.

This software cannot be used to create custom screen themes for the older monochrome Vision handsets.

1.3 Copyright and Applicable Law

These instructions are copyrighted, all rights reserved. It may not, in whole or in part, be copied, photocopied, reproduced, translated, or reduced to any electronic medium (including the Internet) or machine-readable form without prior consent in writing from AP Diving.

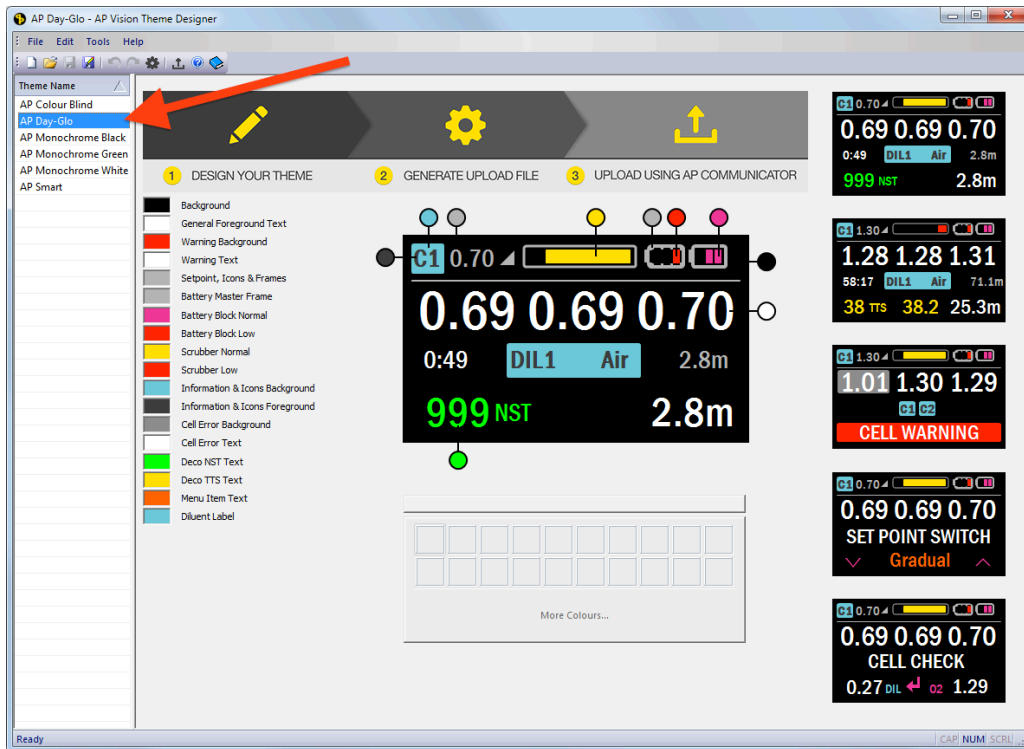
All products are sold on the strict understanding that only English Law applies in cases of warranty claims and product liability, regardless of where the equipment is purchased or used. Should a claim be made then the venue for this would be in Truro, England.

© 2017 AP Diving.

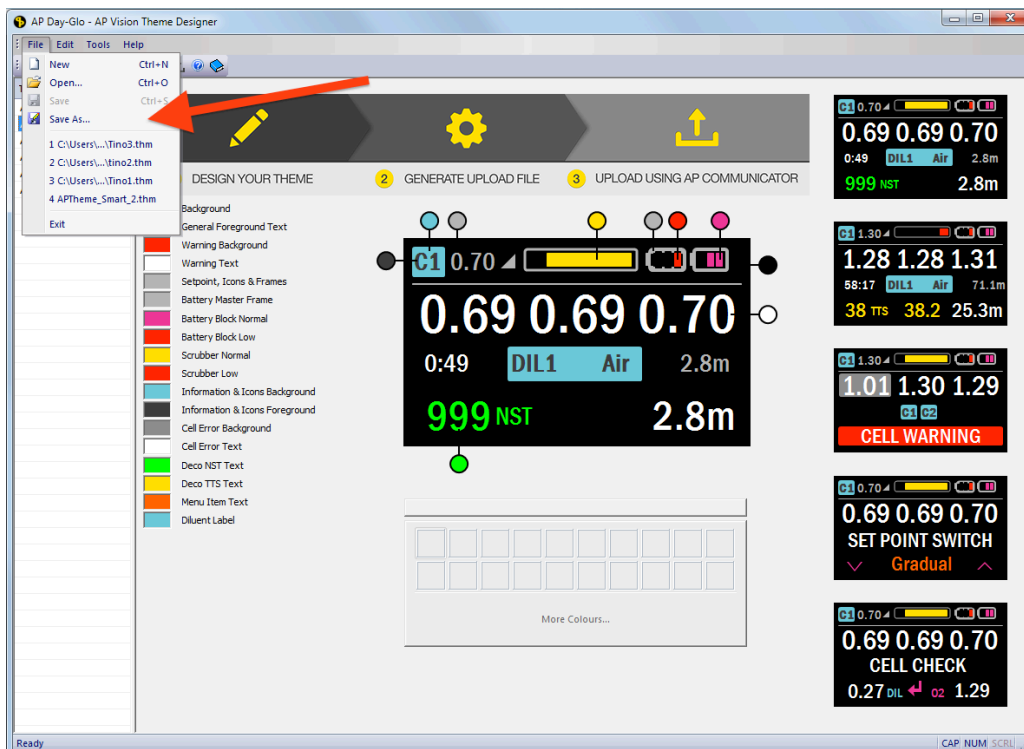
AP Vision Theme Designer software and User Manual

2. Creating a new colour theme

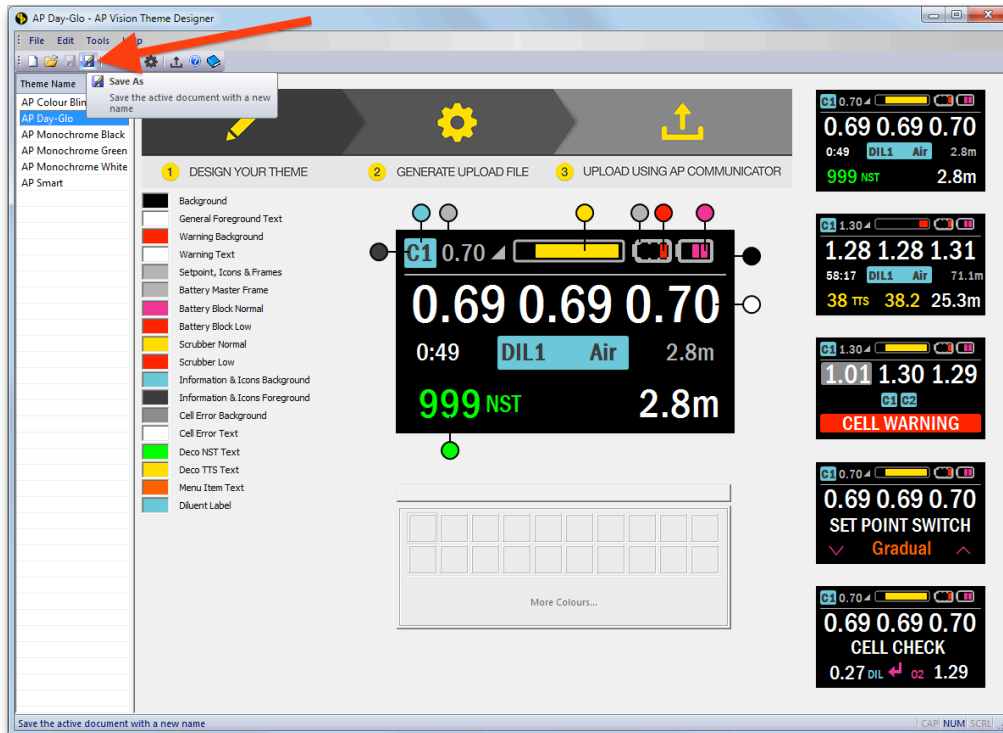
- 1) Select an existing colour theme. Select the one with the closest resemblance to the new one you want to create.
In the example below we choose existing AP theme “AP Day-Glo” to start with:



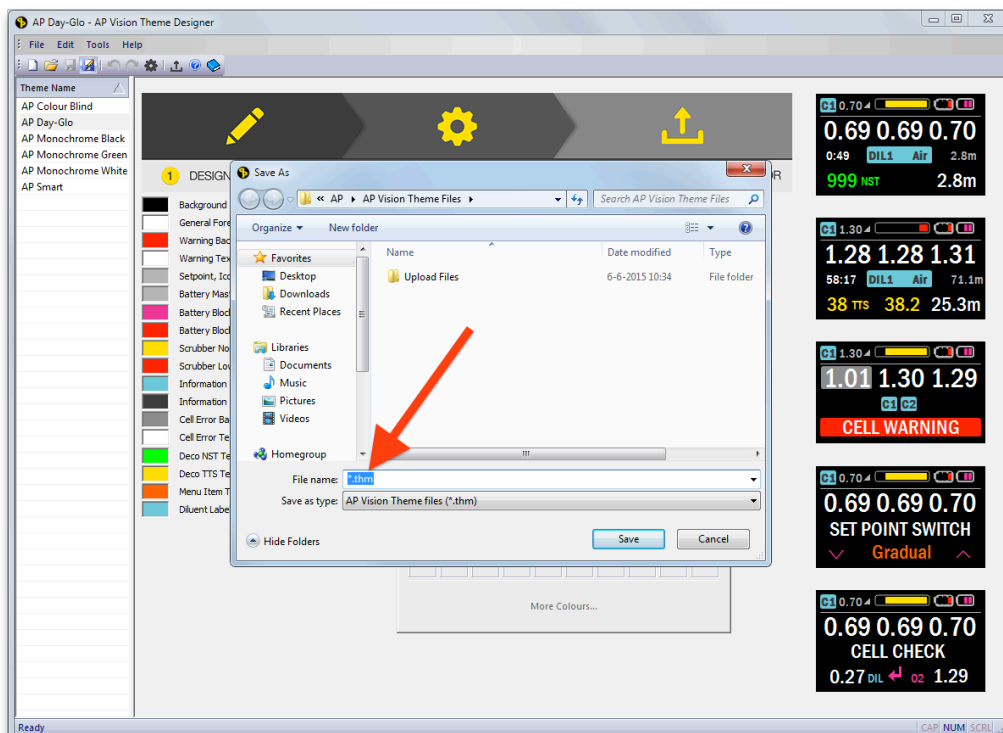
- 2) Select the “Save as...” Button in the “File” dropdown menu in the upper left corner of the screen:



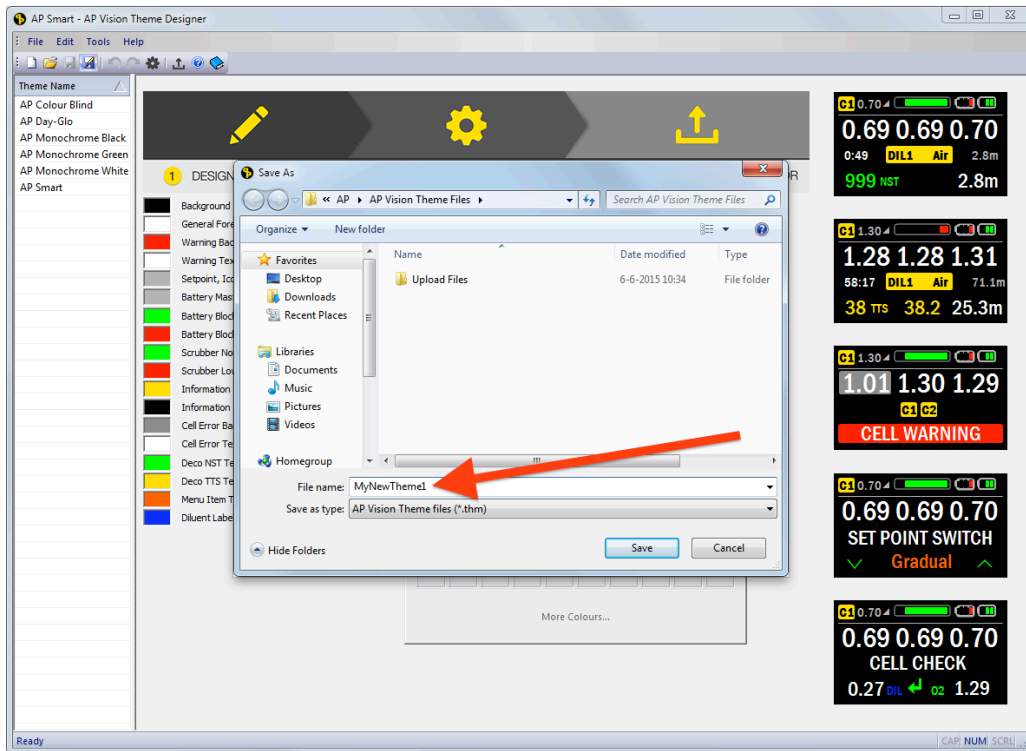
- Alternatively you can select the “Save as...” button in the icon bar in the top left corner of the screen:



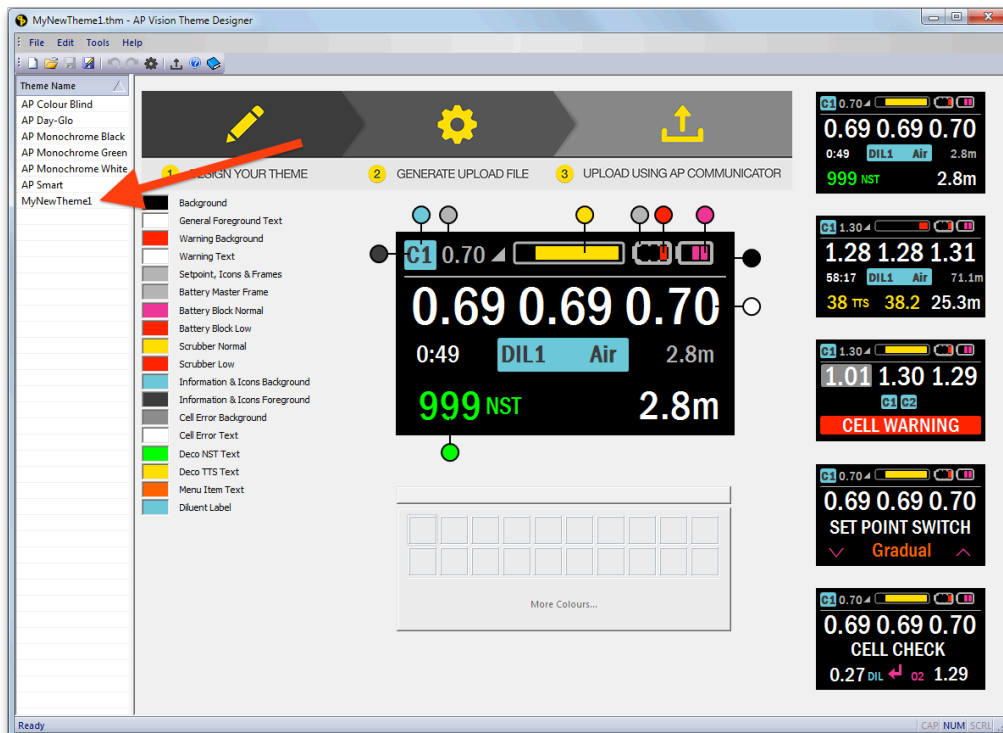
- A pop-up screen will now appear which allows you to specify the location of your new theme file. We suggest you leave the suggested file directory unchanged, being “My Documents → AP → AP Vision Theme Files”.



- Change the “file name” field to the name you chose for your new theme file.
In the example below we choose the new file name to be “MyNewTheme1.thm”.

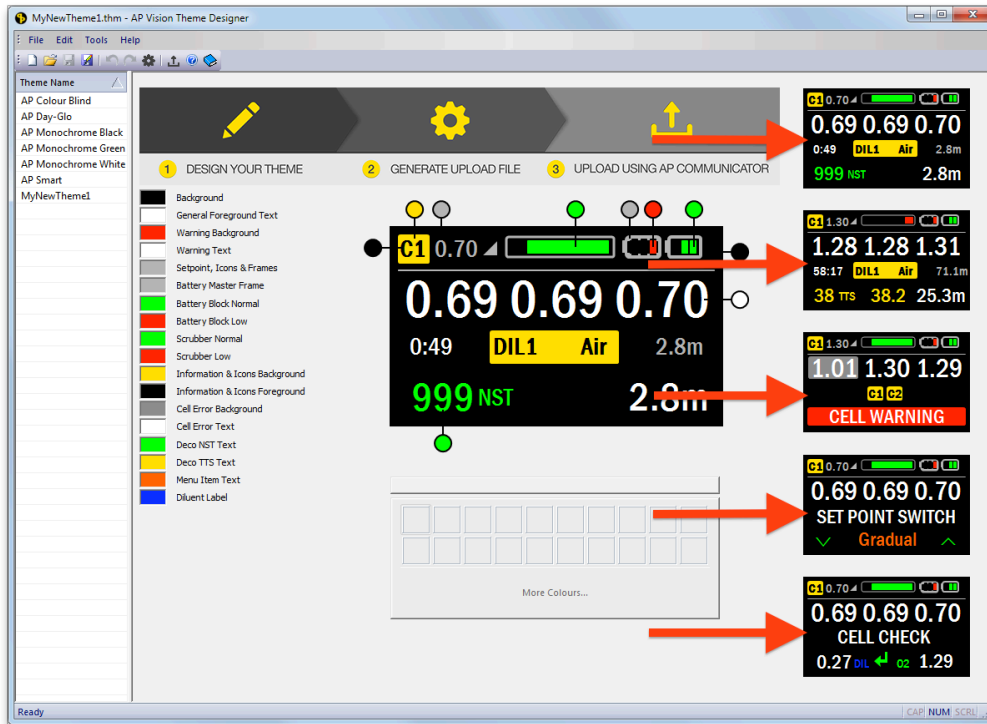


- By pressing the “Save” button you have now created a new theme and associated theme file. Its name will now show up in the list of themes in the column on the left of the screen, and can be selected for further customization:

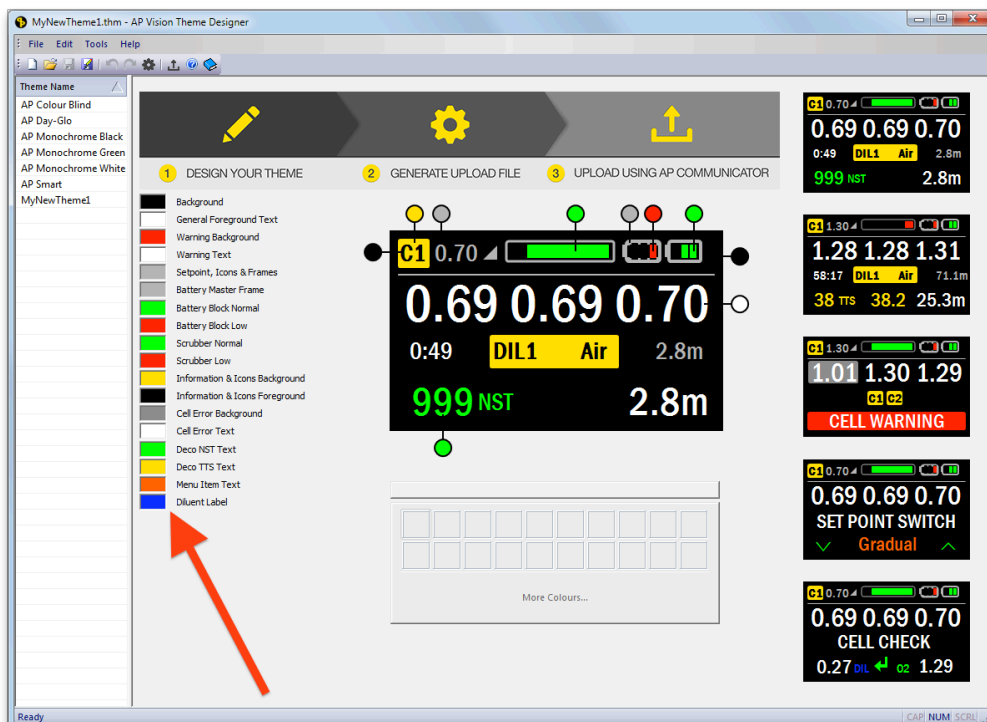


3. Customising your new colour theme

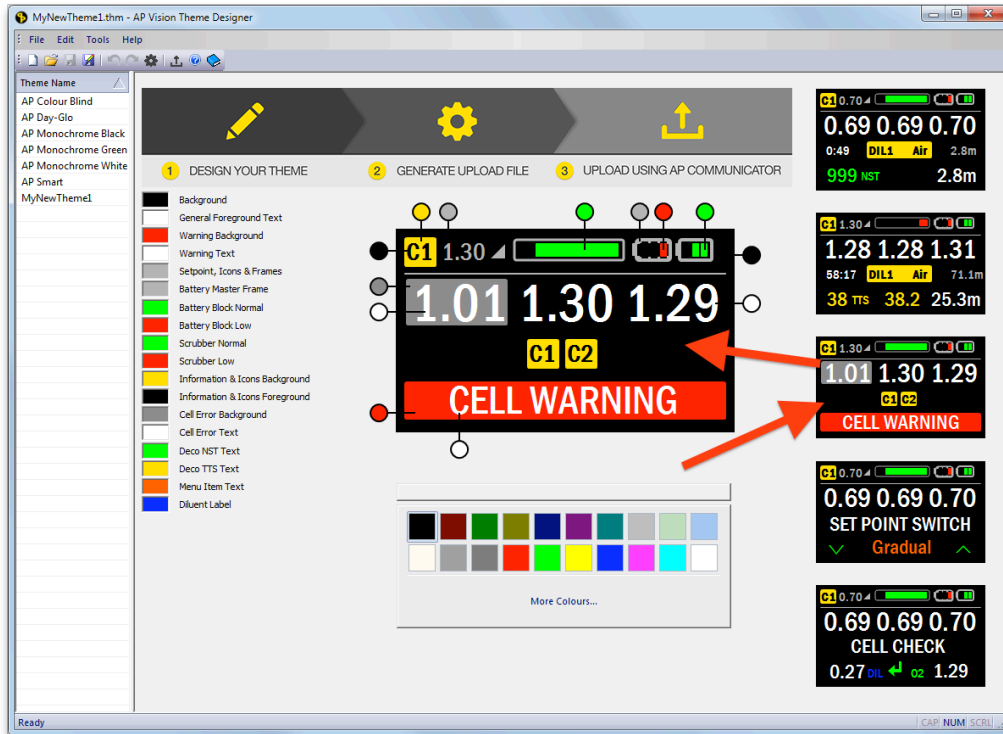
- 1) On the right side of the big screen depicting the currently selected screen for customizing there is a row of 5 smaller screens. These are called “mimics” and they represent all possible screen variations in the 2020 Vision colour handset, and as such also represent all user-changeable fields:



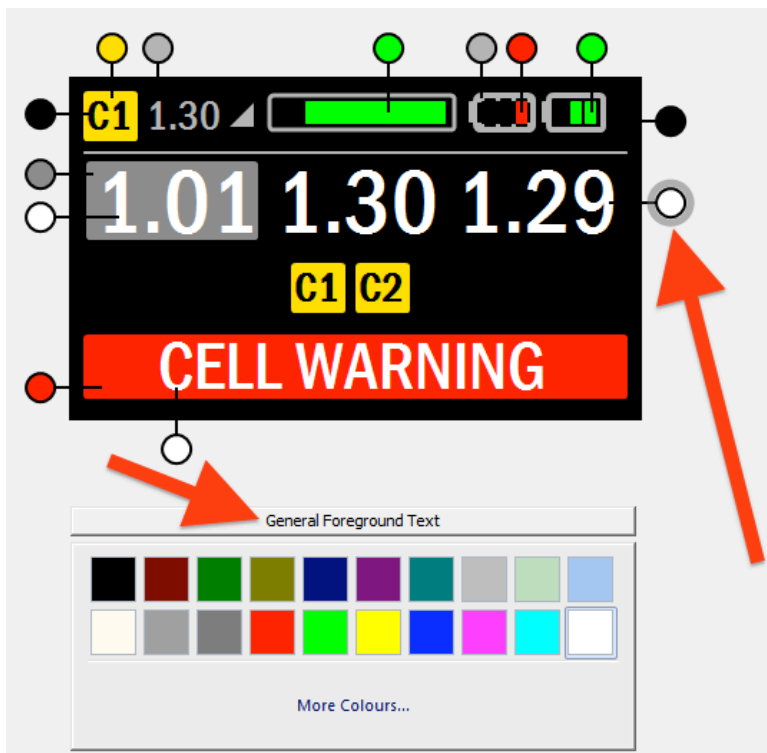
- 2) On the left side of the big central screen you find a row containing ALL the types of fields as used in the various screens of the 2020 Vision handset:



- To change a colour, first click on one of the 5 small mimics to make it the main focus entry mimic (i.e. the large one in the centre), and as such the screen you want to change. Here we select the "CELL WARNING" mimic in order to be able to change it:

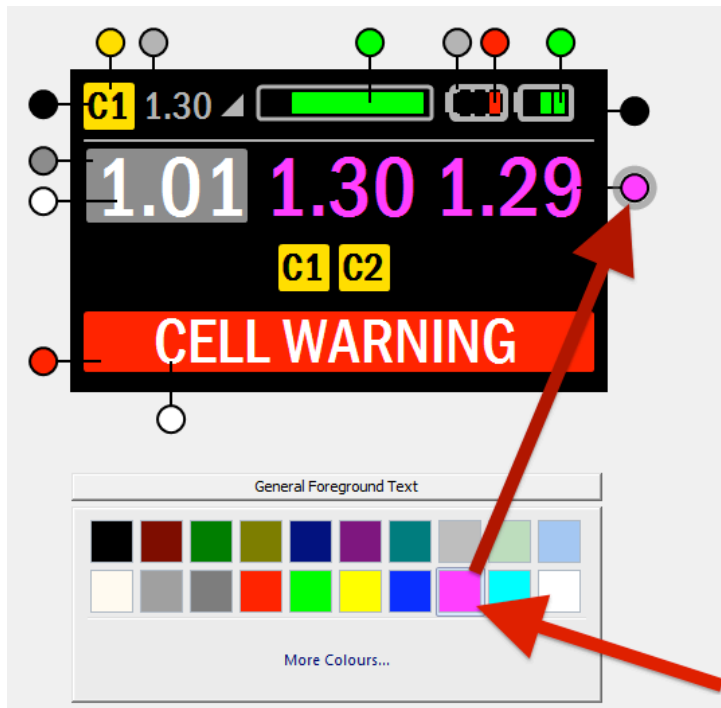


- All of the colours that can be changed on the currently selected screen have "lollipops" to indicate the items that can be changed. If you click on a lollipop it highlights to show that it is the currently active one. The highlighting is visible by the light grey shadow ring around the selected lollipop. The name of the item type (in this case "General Foreground Text") is also shown above the colour selection field:

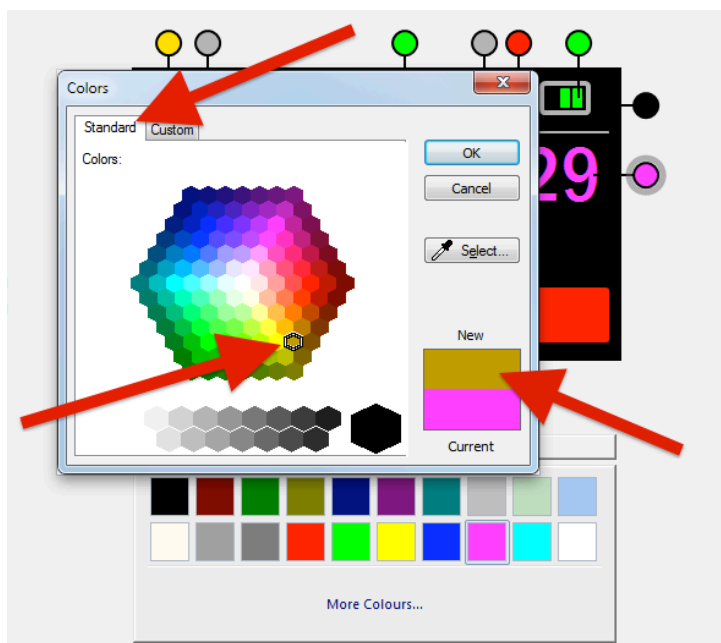


- 5) You can now select or create any colour, using the standard Windows colour selection box. You can do that by either:
 - a. Picking a colour from the default 20 colours shown in the two rows in the colour selection box, or
 - b. Using the "More Colours" button to drop down into custom choices, allowing you to select just about any colour you want.

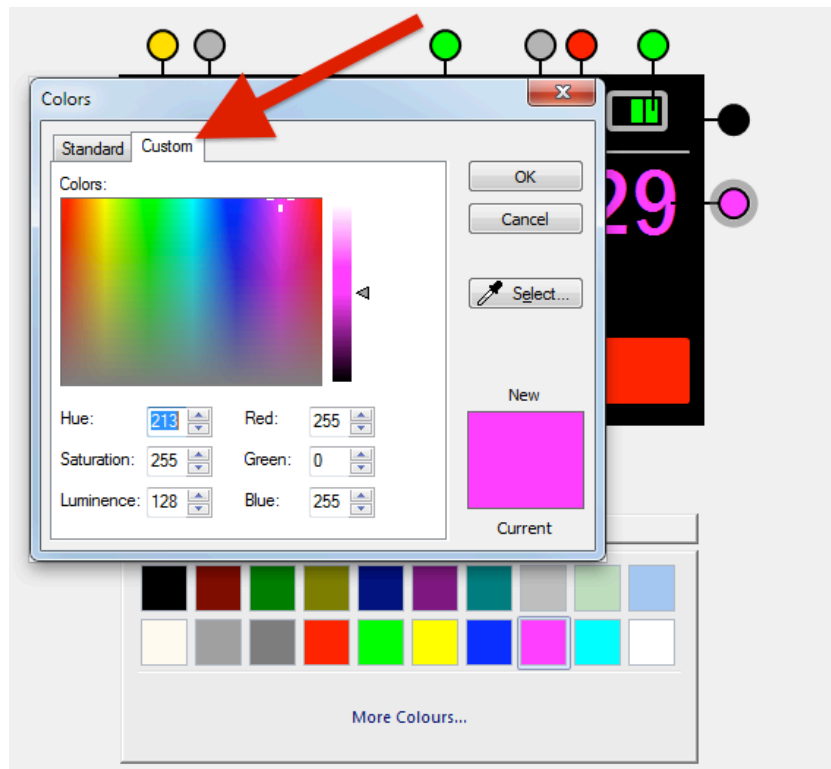
If you click on any of the 20 standard colours in the colour picker box, the item you selected for change in the screen will change to that colour, allowing you to inspect the effect of your colour selection.



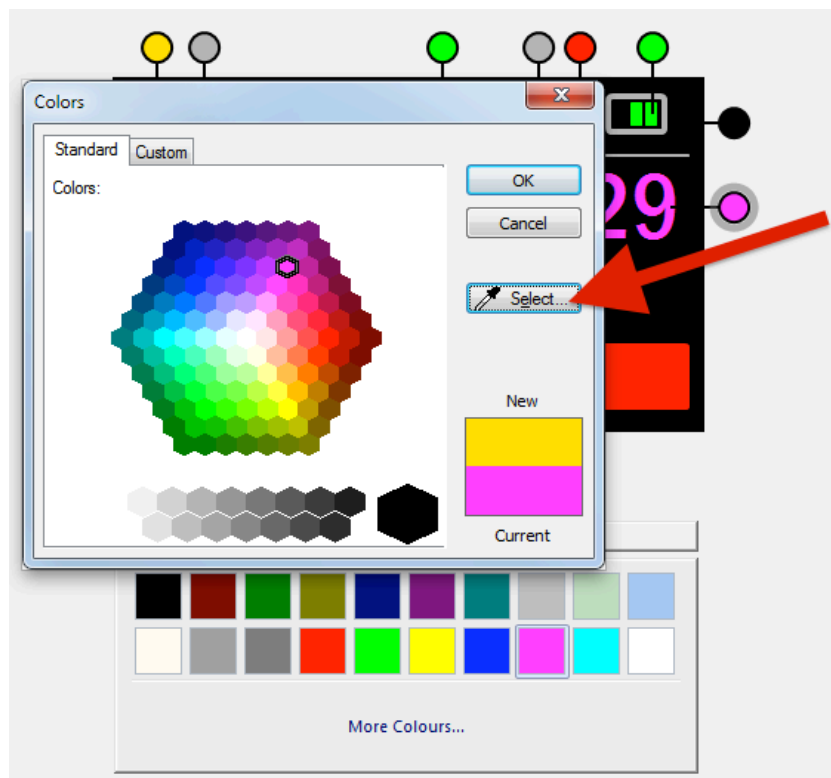
- 6) If you press the "More Colours" button then you get three more options:
 - a. Choose a colour from the extended set of standard colours by selecting the "Standard" tab:



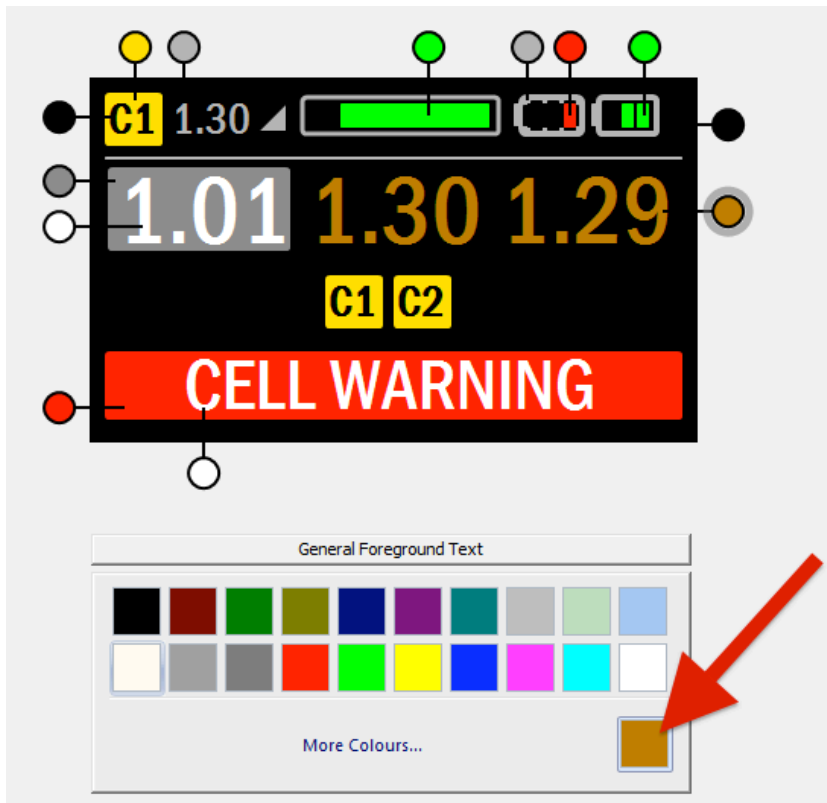
- b. Or choose a custom colour, by selecting the "Custom" tab:



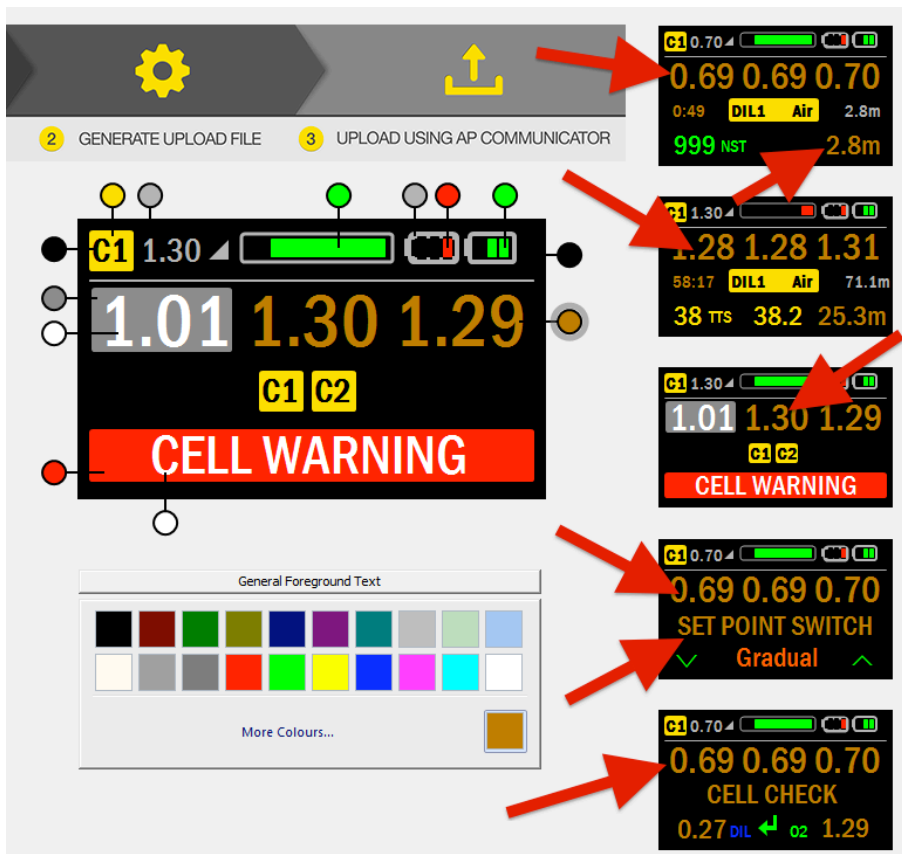
- c. Or choose a colour by using the "dropper Select", which allows you to pick any colour from any window open on your PC. So if you have an existing image or photo you can simply pick up the colour from that image:



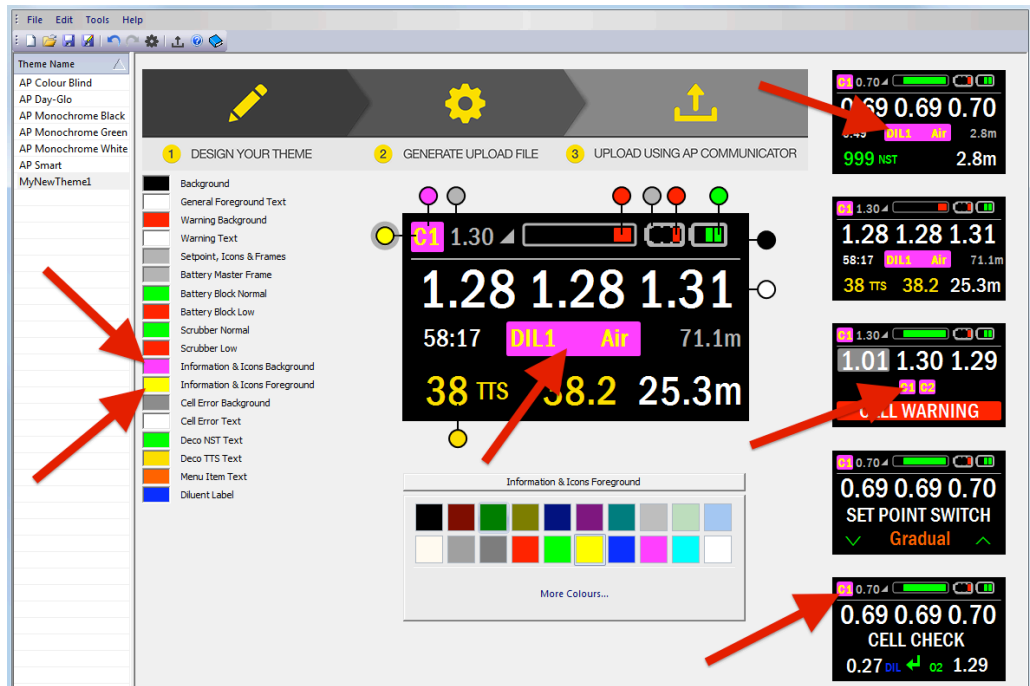
- 7) If the colour you selected is not one of the 20 standard colours, it is also shown on the right of the "More Colours" button:



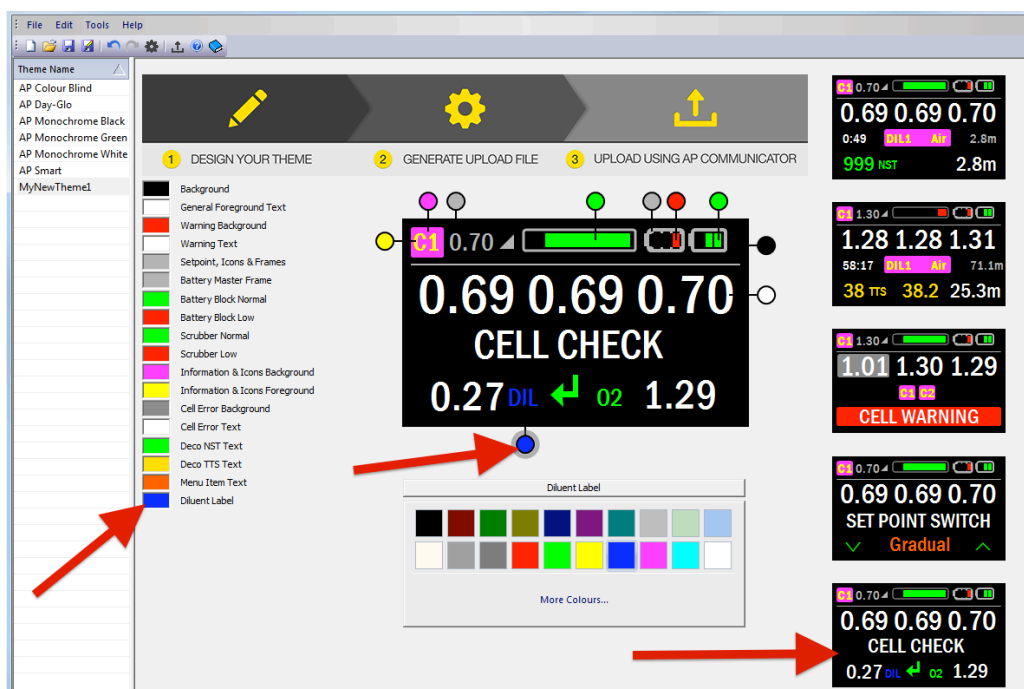
- 8) When a new colour is selected, it is also displayed on all small mimics instantaneously in the appropriate fields, to show the effect on all items and screens:




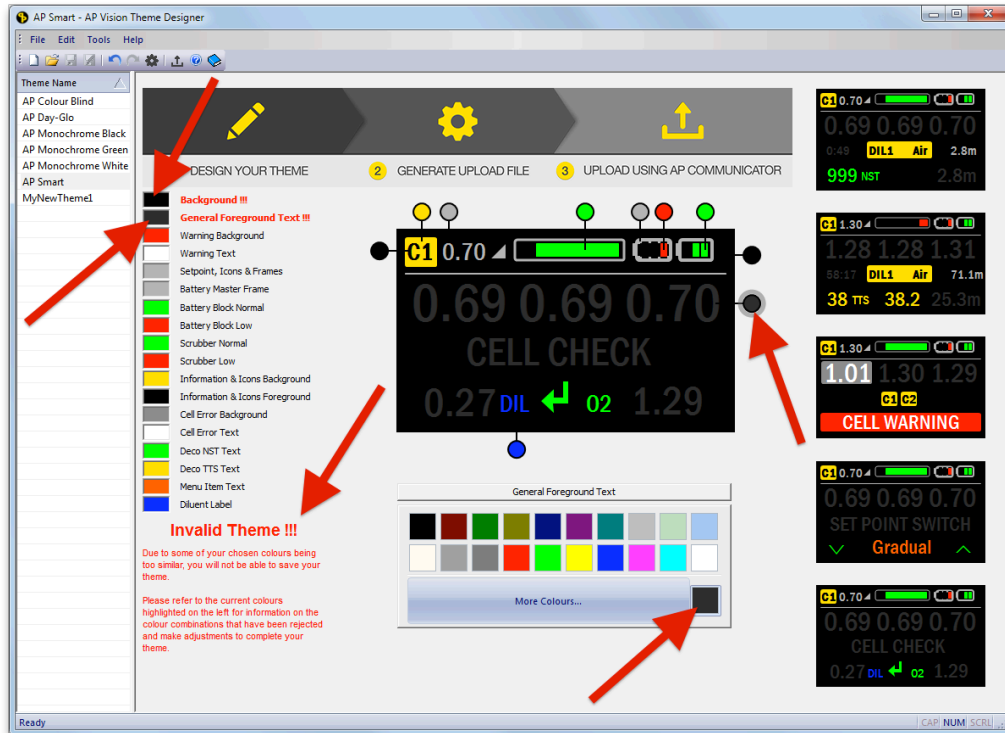
- 9) You can now begin to make changes to your theme to adjust it to your liking. In the example below we have changed:
- the colour of the “Information & Icons Background” to purple, and
 - the colour of the “Information & Icons Foreground” to bright yellow.
- Notice that all relevant fields in the 5 small mimics also get automatically updated:



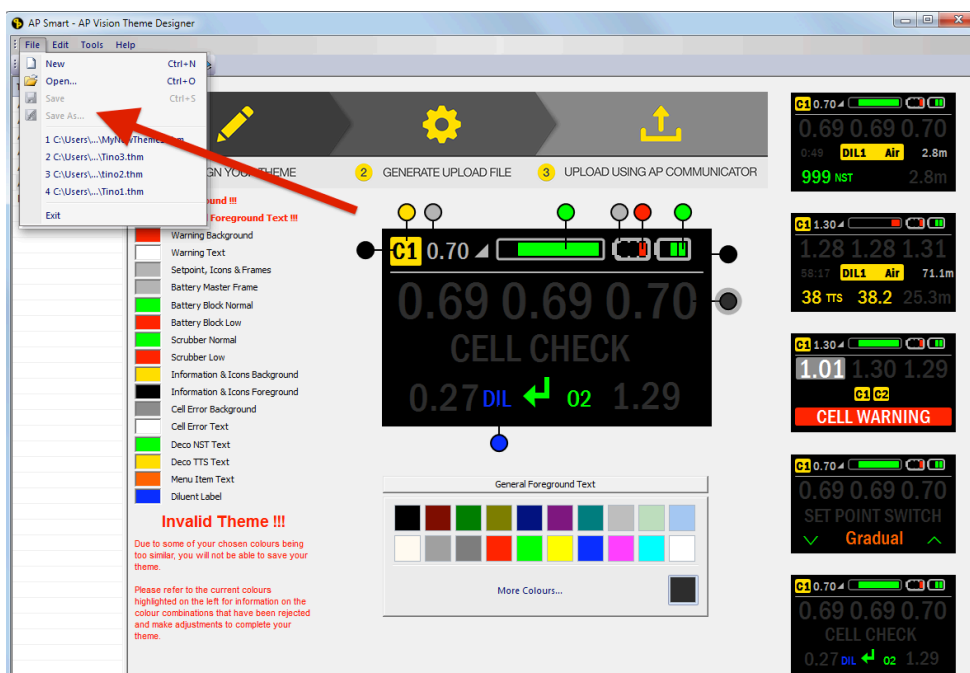
- 10) If you click on any of the colour patches for the items in the legend (the column on the left with all the field names), if that item is not present on the current active large mimic, it will open the first mimic that does have that item and it will highlight that item on the now active large mimic.
- As an example let’s click on the colour patch next to the “Diluent Label”. The 5th small mimic will now become the active one in the middle, as that is the only screen of the 5 mimics that carries the diluent label. The associated “lollipop” is already highlighted:

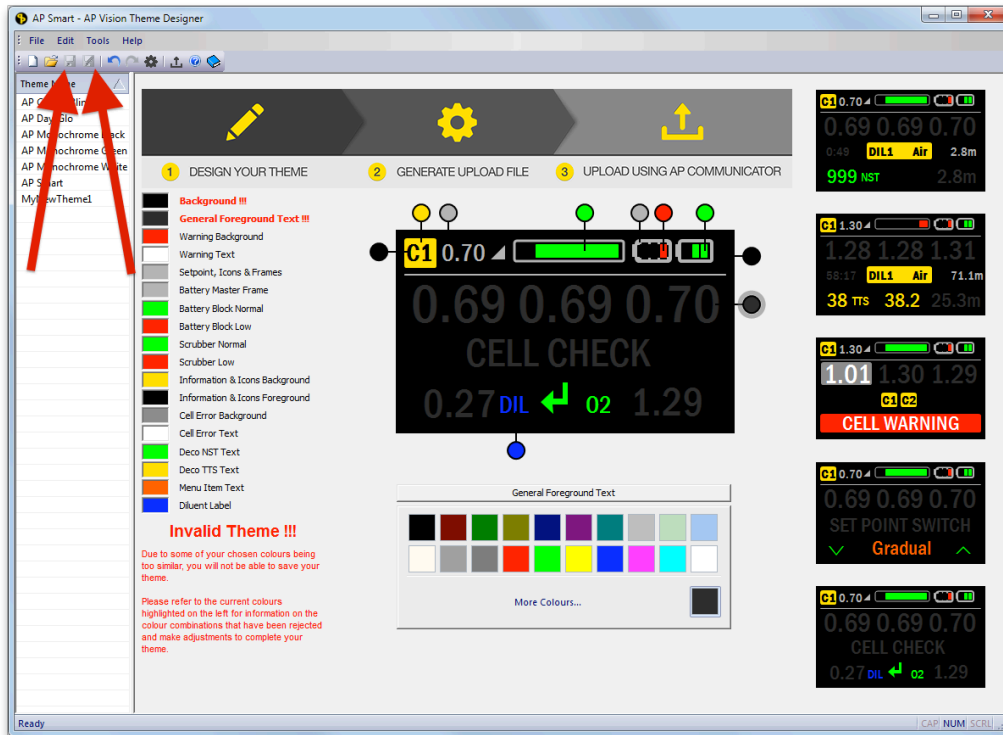


- 11) **WARNING**  If you select a background/foreground pair that contains colours that are too similar to each other and as such do not offer enough contrast to be properly readable on the handset, the theme gets invalidated and you first need to modify one of the colours to correct it. You CANNOT save themes that have colour conflicts. In the example below we have chosen a wrong combination of background and general foreground text colour. The conflicting colours are marked red, and notice a warning text “Invalid Theme !!!” appears in the lower left corner:

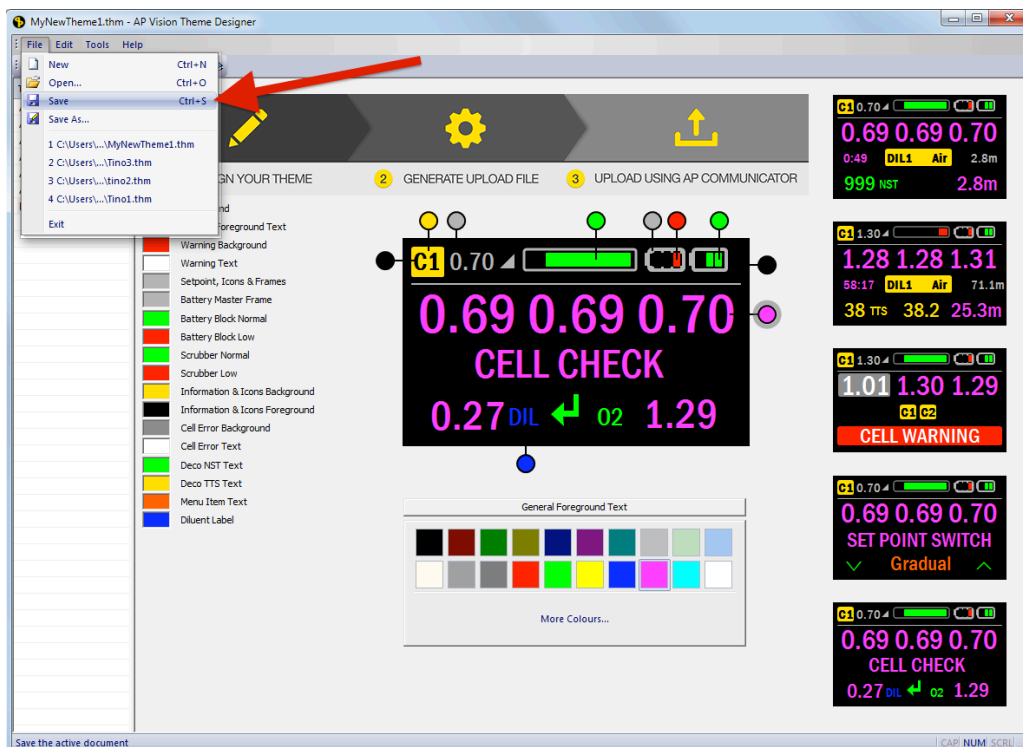


- 12) As long as you have one or more colour conflicts, you will not be able to save the theme, or create a new theme with that conflicting colour combination. The “save” and “save as...” functions and buttons are now greyed out and cannot be selected:

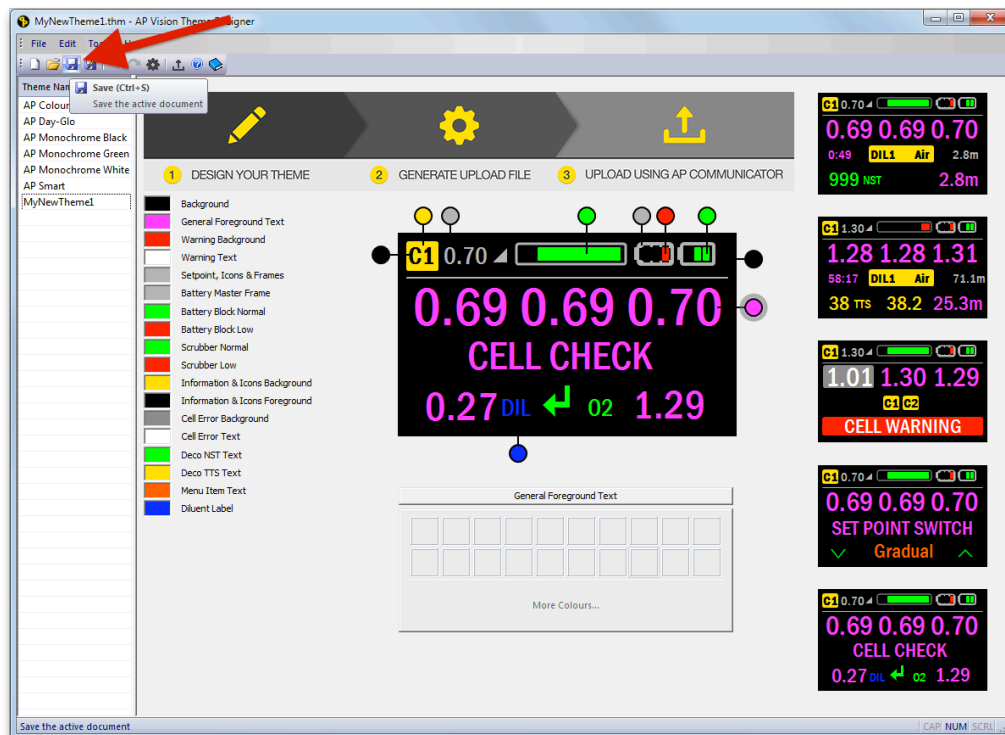





13) Once you have made your preferred changes and have solved all colour conflicts, save the changes to your custom theme by either selecting the File → Save dialog:



Or by simply pressing the “Save” button in the icon bar:



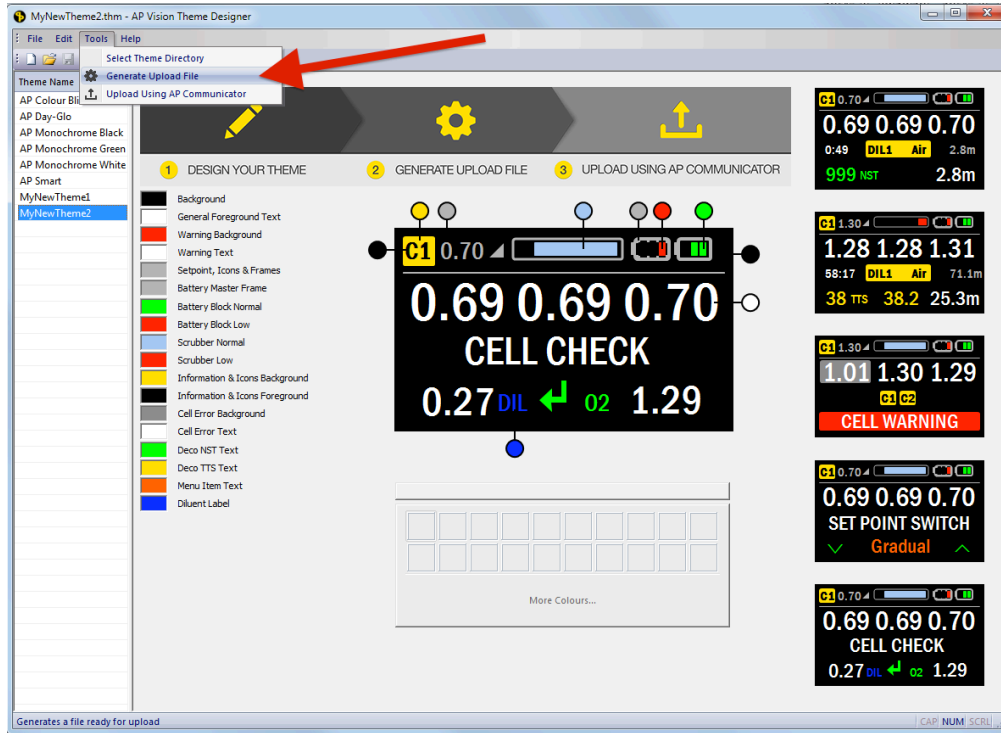
14) **WARNING**  You CANNOT make changes to the 6 default themes that AP provides:

- a. AP Colour Blind
- b. AP Day-Glo
- c. AP Monochrome Black
- d. AP Monochrome Green
- e. AP Monochrome White
- f. AP Smart

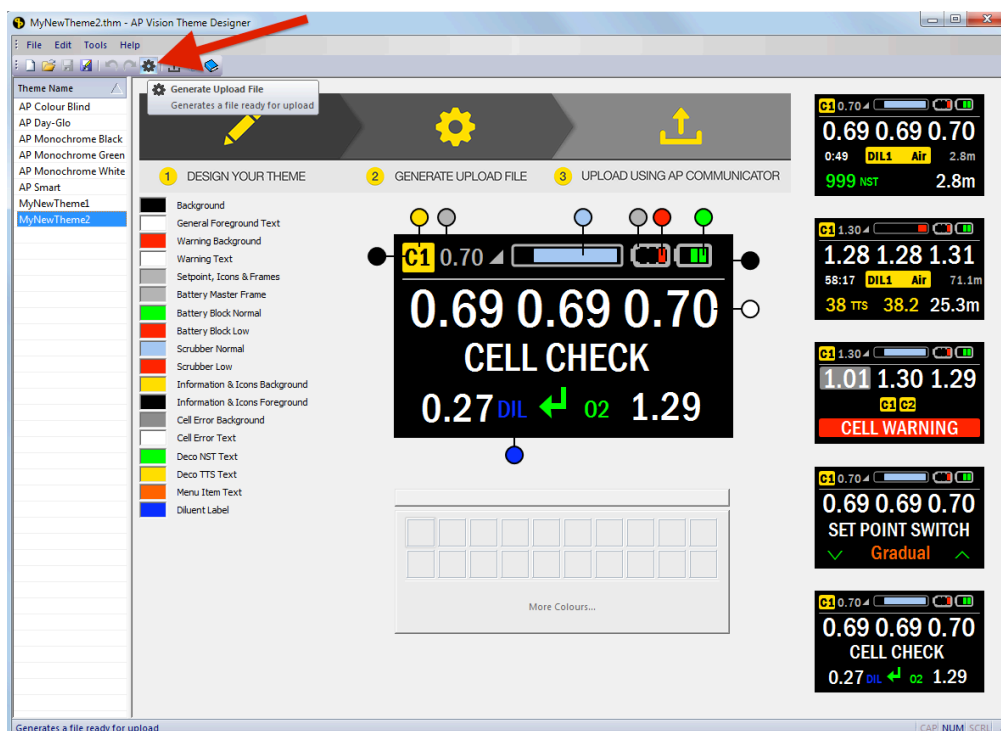
These themes can be used as a starting point to make your own customizations, resulting in a custom theme, but they cannot be changed themselves.

4. Creating an upload file

- 1) Once you are done with all your changes and have saved them in custom themes, you can create an *upload file*. This is the file that will be loaded later on into your 2020 Vision colour handset by using the APD Communicator program. You start the creation of an upload file containing your new theme by selecting “Tools → Generate Upload File” from the Tools menu in the upper left corner (on the right of the File menu):



- 2) Alternatively you can select the “Generate Upload File” button in the icon bar in the top left corner of the screen (on the right of the “Redo” button):



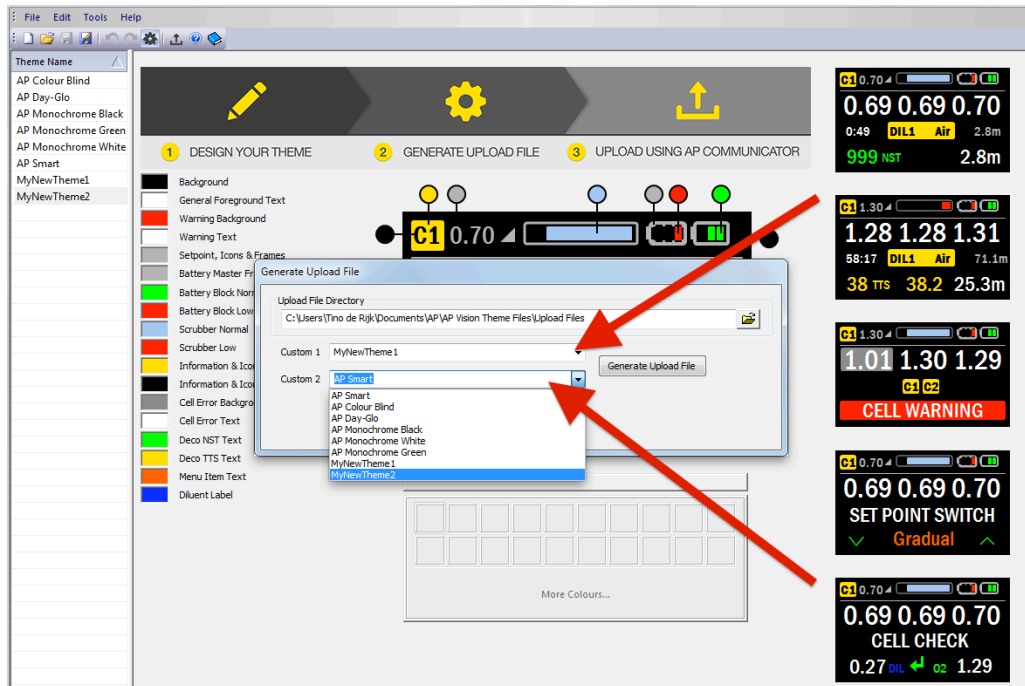
- 3) A screen box called “Generate Upload File” will now appear. We suggest you leave the suggested file directory unchanged, being “Documents → AP → AP Vision Theme Files → Upload Files”.

In this screen you can select two themes to go into the upload file.

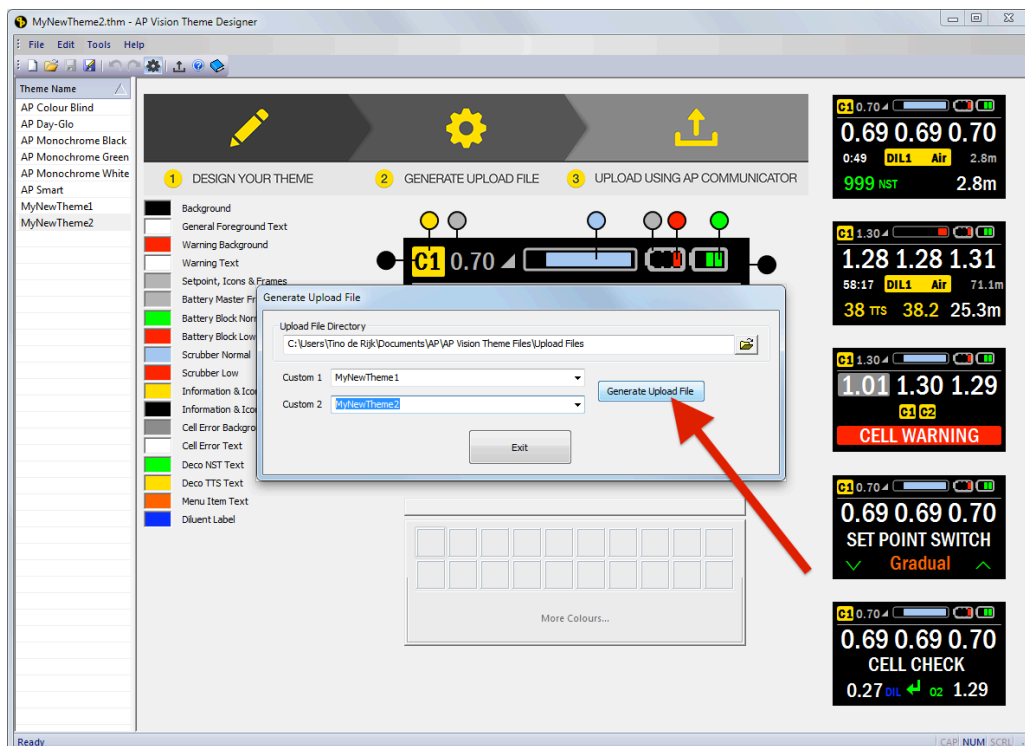
Each upload file can and must contain two themes: no more, no less.

If you select only one custom theme for upload, the other theme will automatically default to AP’s default theme, called “AP Smart”.

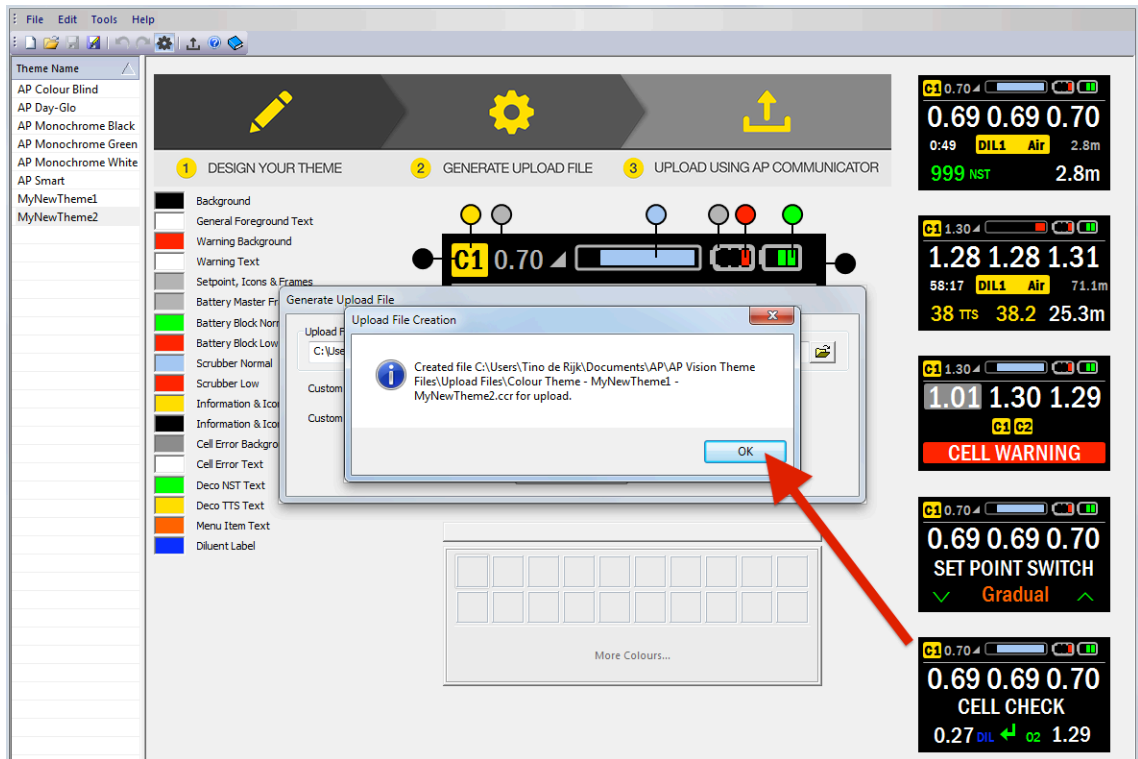
Select the one or two themes you want to go into your upload file using the two dropdown selection boxes:



- 4) Now press the “Generate Upload File” button to actually create the upload file:



- 5) The filename for the upload file will be generated automatically. The file name has the format “Colour Theme - <name of the first theme> - <name of the second theme>.ccr”.
- So in this example the name will be “Colour Theme – MyNewTheme1 – MyNewTheme2.ccr”:



5. Upload the file to your handset with AP Communicator

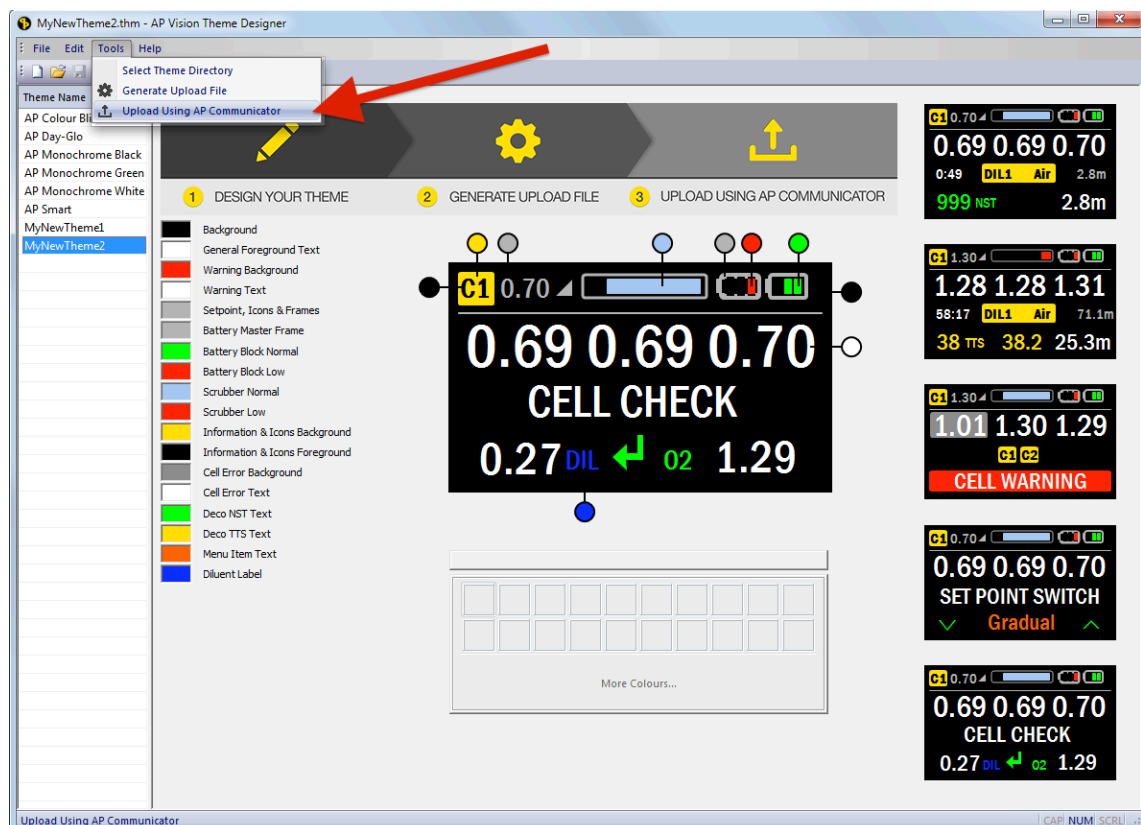
- 1) The file with your custom themes is now created and can be uploaded to the 2020 Vision colour handset. This is done with the use of the AP Communicator program. Vision users will know this program already as it is used for many other functions:
 - a. Downloading log and dive profile files, either with:
 - i. a serial or USB cable connection,
 - ii. the AP DiveStore stick, or
 - iii. a Bluetooth connection (2020 Vision colour handset only).
 - b. Uploading firmware updates
 - c. Performing remote diagnostics.

The same program can now also be used to upload the colour theme files to your colour handset.

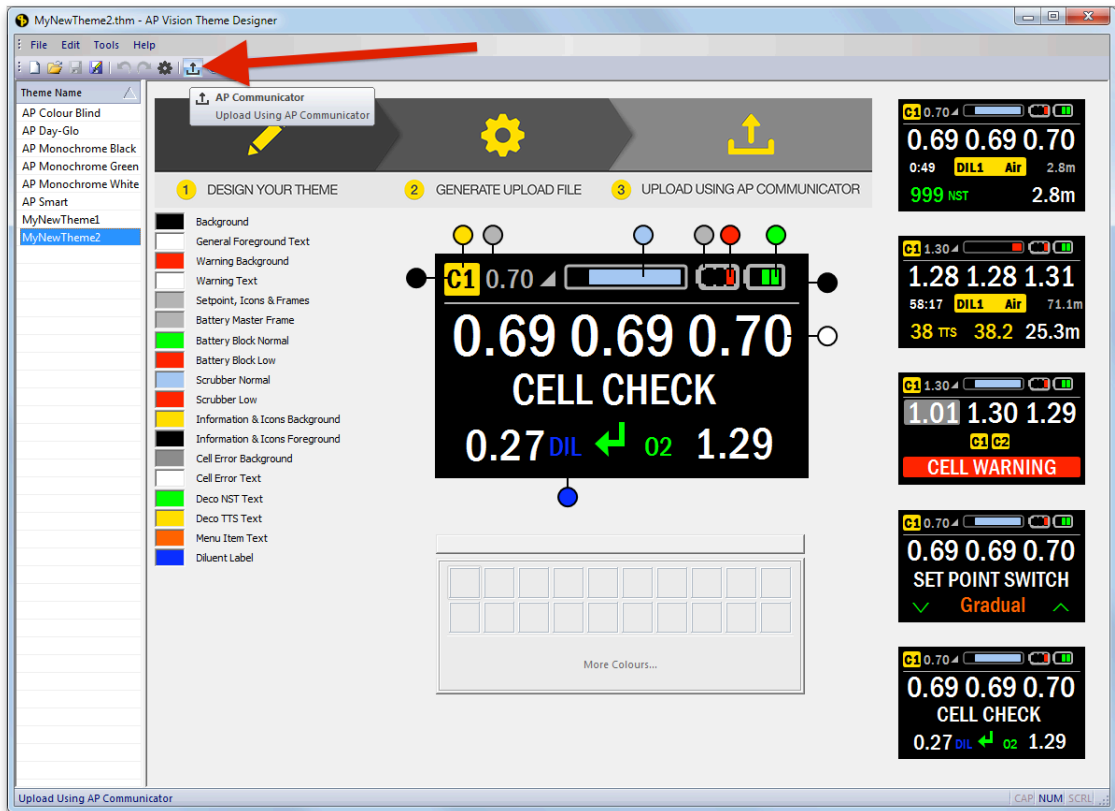
AP Communicator can be automatically started from within the AP Theme Designer program. This way creating and uploading theme files becomes one integrated workflow.

WARNING  The version of AP Communicator needs to be **5.2.0.0 or higher**.

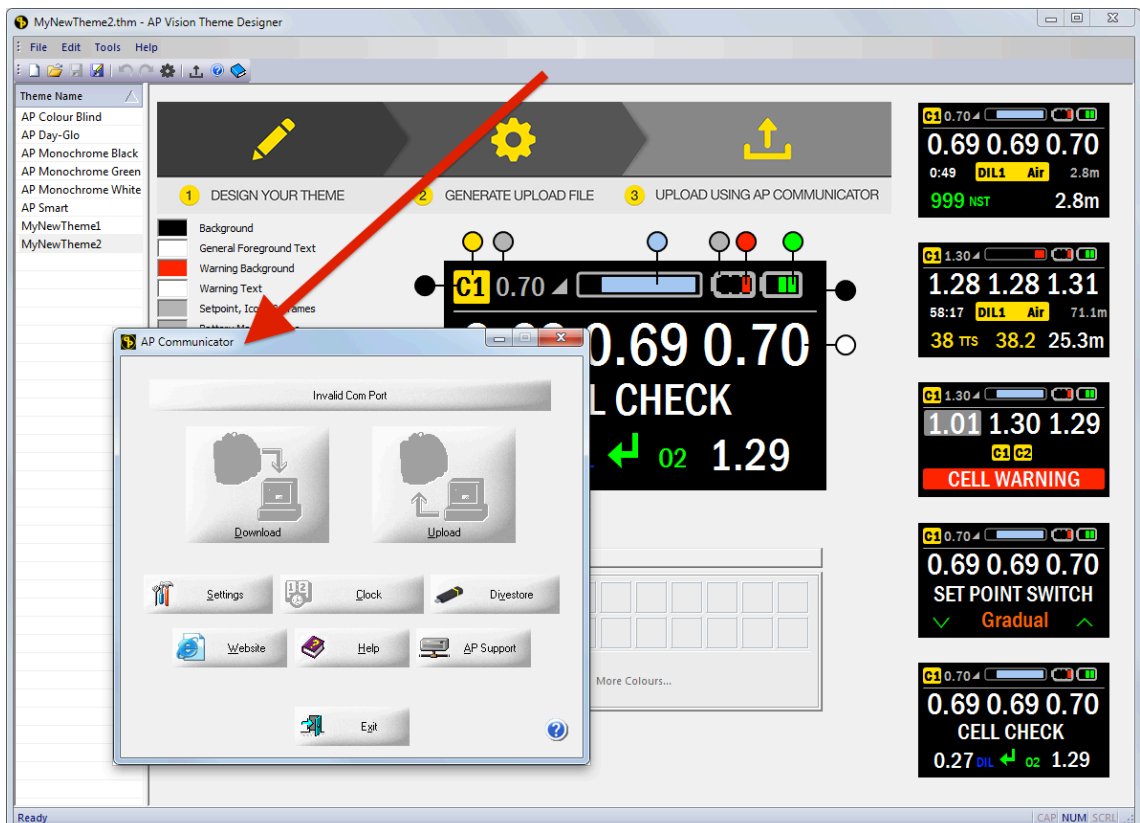
- 2) Starting the AP Communicator program from within the AP Theme Designer program is done as follows. Select the "Upload using AP Communicator" function from the "Tools" menu:



- Alternatively you can select the “AP Communicator” button in the icon bar in the top left corner of the screen:

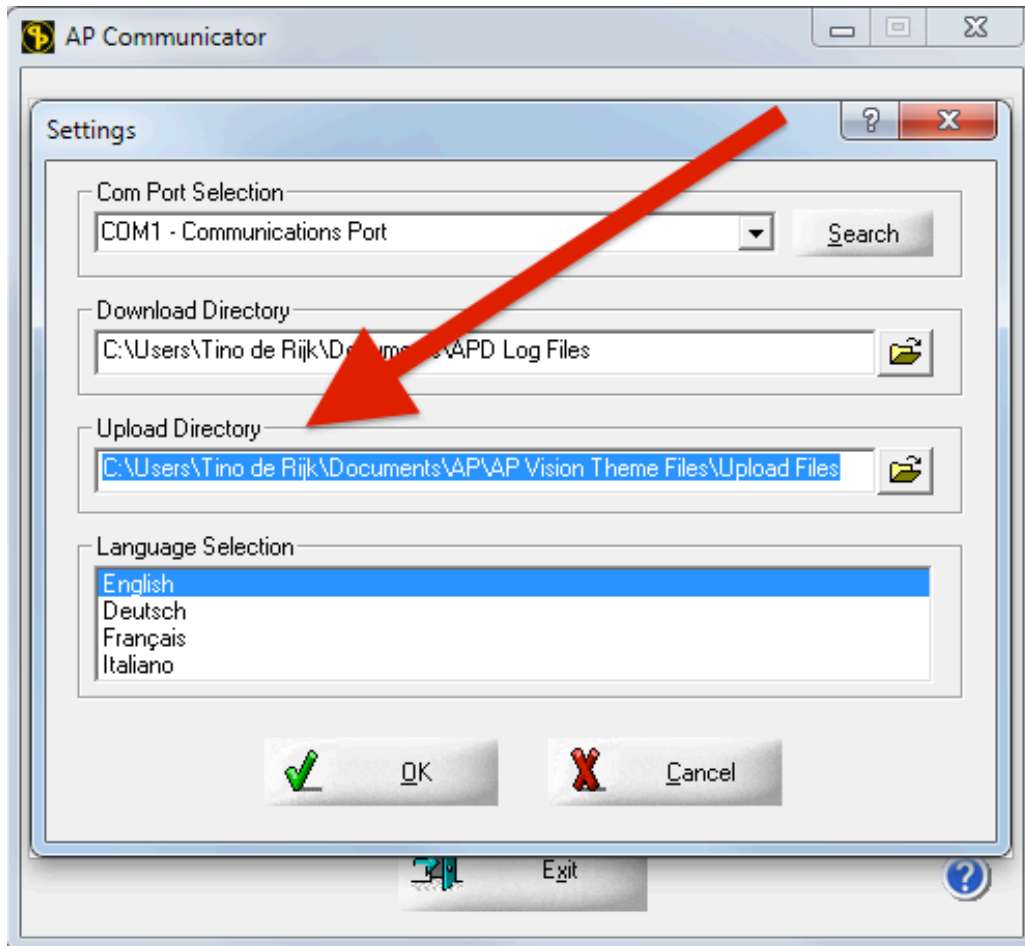


- Either action will start up the AP Communicator program, which can then be used to perform the actual upload to the 2020 Vision colour handset:



- 5) For configuring and using AP Communicator we refer to chapter 12 “PC Connection” of the AP Inspiration Rebreather User Manual (revision 05/15 or higher).

Make sure to select the correct upload directory containing your custom theme files within the AP Communicator program. By default this is “Documents → AP → AP Vision Theme Files → Upload Files”:



Now you can enjoy your own custom colour themes!